



## TECHNOLOGY MANAGEMENT

### BIM, GIS, AND COLLABORATION TECHNOLOGY

Procon provides expertise in planning, procuring, developing, and implementing business and technology solutions. We analyze existing processes and outcomes and develop ways to streamline and improve business operations and management. Our approach ensures effective integration and implementation of new applications and solutions with existing processes and systems.

#### IT PLANNING

- Needs assessment
- Budgeting and Scheduling
- Project formulation
- Requirements development
- Product testing and assessment
- Vendor assessment and selection
- Scope planning and development
- Vendor selection management

#### APPLICATION DEVELOPMENT

- Technical scope specifications
- Analysis of existing processes
- Software release analysis
- Test plans and scripts
- Functional testing
- User Acceptance Testing (UAT)
- Monitor progress schedules
- Earned value analysis
- Quality monitoring
- Risk assessment and management
- Process and data integration

#### SYSTEM IMPLEMENTATION

- Training course design
- Start-up and ongoing training
- Live, written, and video training
- In-person group support
- Help desk support
- Communication protocols
- Meeting coordination
- Executive presentations
- Internal marketing and promotion
- Application/process integration
- Application/process roll-out

#### PROJECT MANAGEMENT TECHNOLOGY

- Program strategy and policy
- Program integration and support
- Project stand-up
- Data migration
- End-user support and training
- Change management
- Spatial data validation

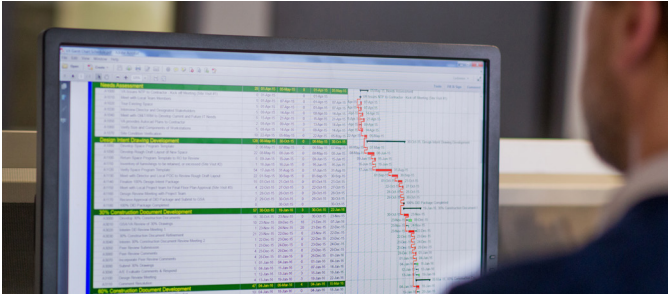
#### BUILDING INFORMATION MODELING (BIM)

- Program strategy and policy
- Program integration and support
- BIM interaction visualization
- Video and virtual reality animation
- BIM drafting
- Clash detection analysis
- Model integrity checks
- Spatial data analysis
- Facility management data checks

#### GEOGRAPHIC INFORMATION SYSTEMS (GIS)

- Program strategy and policy
- Program integration and support
- Site conditions mapping and analysis
- Clash detection analysis
- User application development
- BIM/GIS integration
- Spatial data validation
- Cartography and data visualization

## SAMPLE PROJECTS



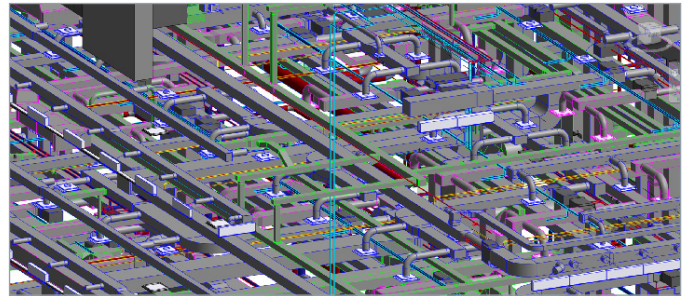
**GSA NATIONWIDE ePM PROGRAM** Program development, implementation, and ongoing support for GSA's nationwide electronic project management program.



**DHS AT ST. ELIZABETHS GIS** Development of GIS database of existing and as-built conditions including utilities, landscape, civil infrastructure, and other site conditions.



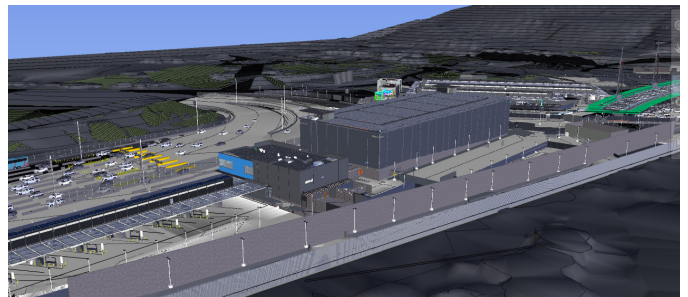
**NASA MEASUREMENT SYSTEMS LABORATORY BIM** Expertise and support services for BIM deliverables related to design of the 175,000 SF laboratory building.



**GSA REGION 3 BIM PROGRAM** BIM technical consulting, program management, and program support for GSA's BIM program in Region 3.



**985 MICHIGAN AVENUE BIM** Facilitation of BIM use during design reviews and provision of quality control analysis including clash detection and spatial data validation.



**SAN YSIDRO LAND PORT OF ENTRY BIM** Video animations, user support, and BIM quality control analysis including clash detection and spatial data validation.

## SMALL BUSINESS & 8(a) STATUS

**SMALL BUSINESS** Procon is a small business according to federal SBA standards for applicable NAICS codes.

**8(a) STATUS** Procon is part of an SBA-registered 8(a) mentor-protégé relationship which makes us available for 8(a) set-aside work.

## CONTACT US

Kyu Jung | President  
kjung@proconconsulting.com | 571.384.2385

Mark Ilich | Vice President  
milich@proconconsulting.com | 571.384.2386

Georgette Cardona | Director of Business Development  
gcardona@proconconsulting.com | 301.503.2306

## GSA SCHEDULES

**PROFESSIONAL SERVICES SCHEDULE (PSS) GS-00F-247CA**

**C871-7:** Construction Management and Engineering Services

**C874-1:** Integrated Consulting Services

**C874-7:** Integrated Business Program Support Services

**C520-12:** Budgeting

**C520-13:** Complementary Financial Management Services

**procon:consulting**

1005 N. Glebe Road, Suite 325 | Arlington, VA 22201 | 703.527.7059

[proconconsulting.com](http://proconconsulting.com)