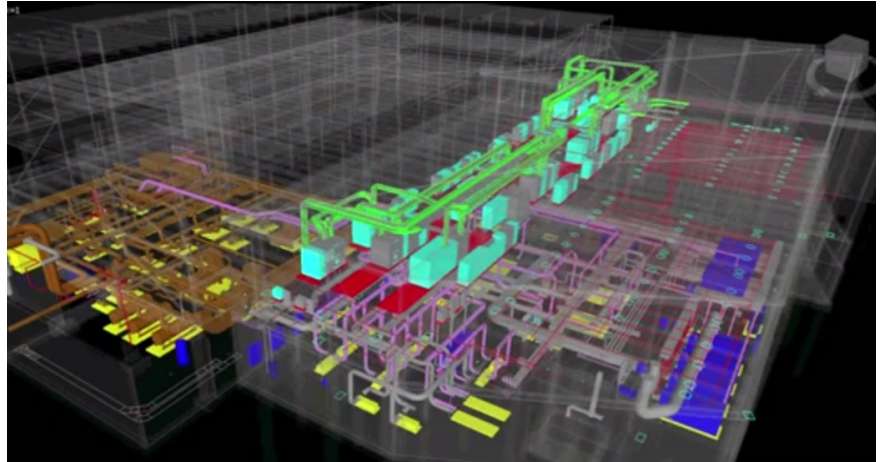


BUILDING INFORMATION MODELING

Philadelphia, Pennsylvania

services provided
PROGRAM MANAGEMENT

owner
U.S. GENERAL SERVICES ADMINISTRATION



Procon provides a wide range of technical consulting services to the General Services Administration (GSA) to assist them with their nationwide Building Information Modeling (BIM) programs and goals.

As the nation's largest landlord, GSA was looking for program support to assist them better managed their owned assets and construction projects with the use of Building Information Modeling (BIM).

In addition to assisting in constructability reviews, clash detection, sequencing and budgeting construction projects, BIM is a powerful tool for facilities operation and maintenance through the life cycle of the building, its systems, and other components.

Key Responsibilities

- Developing requirements for software solutions to integrate multiple building management systems including BIM, Energy Management Systems (EMS), Building Automation Systems (BAS), and Computerized Maintenance Management Systems (CMMS).
- Managing process to develop requirements for a vendor solution to classify, map, and standardize common data elements from multiple enterprise-level applications as they relate to BIM including ePM, CMMS, BAS, and EMS.
- Assist with developing vendor and product procurement strategies and implementation including developing requests for proposals, managing source selection process, providing technical advice on offerors' compliance with scope and performance standards, and managed delivery of tasks upon award of contracts.
- Developing standards guidelines and framework for GSA's BIM program and assisting GSA revise BIM standards to accommodate changes in their requirements and to respond to advances in BIM technology.