

TECHNOLOGY MANAGEMENT

BIM, GIS, AND COLLABORATION TECHNOLOGY

Procon provides expertise in planning, procuring, developing, and implementing business and technology solutions. We analyze existing processes and outcomes and develop ways to streamline and improve business operations and management. Our approach ensures effective integration and implementation of new applications and solutions with existing processes and systems.

IT PLANNING

- Needs assessment
- Budgeting and Scheduling
- Project formulation
- Requirements development
- Product testing and assessment
- Vendor assessment and selection
- Scope planning and development
- Vendor selection management

APPLICATION DEVELOPMENT

- Technical scope specifications
- Analysis of existing processes
- Software release analysis
- Test plans and scripts
- Functional testing
- User Acceptance Testing (UAT)
- Monitor progress schedules
- Earned value analysis
- Quality monitoring
- Risk assessment and management
- Process and data integration

SYSTEM IMPLEMENTATION

- Application/process integration
- Application/process roll-out
- Training course design
- Start-up and ongoing training
- Live, written, and video training
- In-person group support
- Help desk support
- Communication protocols
- Meeting coordination
- Executive presentations
- Internal marketing and promotion

PROJECT MANAGEMENT TECHNOLOGY

- Program strategy and policy
- Program integration and support
- Project stand-up
- Data migration
- End-user support and training
- Change management
- Spatial data validation

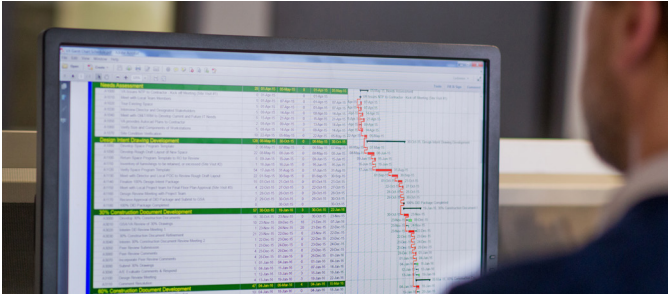
BUILDING INFORMATION MODELING (BIM)

- Program strategy and policy
- Program integration and support
- BIM interaction visualization
- Video and virtual reality animation
- BIM drafting
- Clash detection analysis
- Model integrity checks
- Spatial data analysis
- Facility management data checks

GEOGRAPHIC INFORMATION SYSTEMS (GIS)

- Program strategy and policy
- Program integration and support
- Site conditions mapping and analysis
- Clash detection analysis
- User application development
- BIM/GIS integration
- Spatial data validation
- Cartography and data visualization

SAMPLE PROJECTS



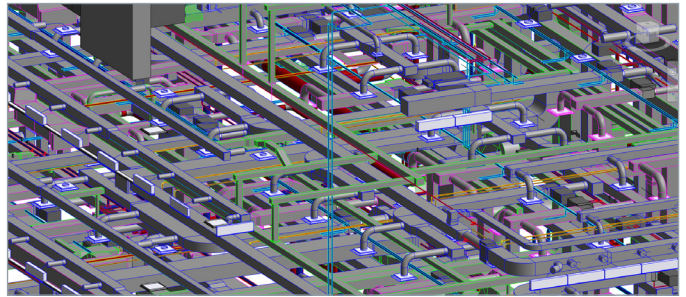
GSA NATIONWIDE ePM PROGRAM Program development, implementation, and ongoing support for GSA's nationwide electronic project management program.



DHS AT ST. ELIZABETHS GIS Development of GIS database of existing and as-built conditions including utilities, landscape, civil infrastructure, and other site conditions.



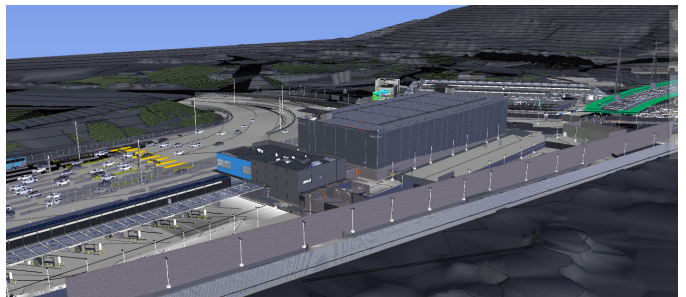
NASA MEASUREMENT SYSTEMS LABORATORY BIM Expertise and support services for BIM deliverables related to design of the 175,000 SF laboratory building.



GSA REGION 3 BIM PROGRAM BIM technical consulting, program management, and program support for GSA's BIM program in Region 3.



985 MICHIGAN AVENUE BIM Facilitation of BIM use during design reviews and provision of quality control analysis including clash detection and spatial data validation.



SAN YSIDRO LAND PORT OF ENTRY BIM Video animations, user support, and BIM quality control analysis including clash detection and spatial data validation.

SMALL BUSINESS & 8(a) STATUS

SMALL BUSINESS Procon is a small business according to federal SBA standards for applicable NAICS codes.

8(a) STATUS Procon is part of an SBA-registered 8(a) mentor-protégé relationship which makes us available for 8(a) set-aside work.

CONTACT US

Kyu Jung | President
kjung@proconconsulting.com | 571.384.2385

Mark Ilich | Vice President
milich@proconconsulting.com | 571.384.2386

GSA SCHEDULES

PROFESSIONAL SERVICES SCHEDULE (PSS) GS-00F-247CA

C871-7: Construction Management and Engineering Services

C874-1: Integrated Consulting Services

C874-7: Integrated Business Program Support Services

C520-12: Budgeting

C520-13: Complementary Financial Management Services

CFMS Schedule Number 47Q SMA18D08PB

712-1 Project Management

712-3 Reconfig/Relocation/Installation Management

712-4 Design/Layout

procon:consulting

1005 N. Glebe Road, Suite 325 | Arlington, VA 22201 | 703.527.7059

proconconsulting.com