

TECHNOLOGY MANAGEMENT

BIM, GIS, AND COLLABORATION TECHNOLOGY

Procon implements technologies for facility design, construction, and operations management to improve efficiencies for project teams, stakeholders, and end users alike. Our approach ensures effective integration and implementation of new applications and solutions with existing processes and systems across all major aspects of facility management throughout the lifecycle.

BIM AND DIGITAL TWINS

- Reality Capture
- Laser Scanning
- Program strategy and policy
- Program integration and support
- BIM interaction visualization
- Video and virtual reality animation
- BIM drafting
- Clash detection analysis
- Model integrity checks
- Spatial data analysis
- Facility management data checks

GEOGRAPHIC INFORMATION SYSTEMS (GIS)

- Program strategy and policy
- Program integration and support
- Site conditions mapping and analysis
- Clash detection analysis
- User application development
- BIM/GIS integration
- Spatial data validation
- Cartography and data visualization

IT PLANNING

- Needs assessment
- Budgeting and Scheduling
- Project formulation
- Requirements development
- Product testing and assessment
- Vendor assessment and selection
- Scope planning and development
- Vendor selection management

APPLICATION DEVELOPMENT

- Technical scope specifications
- Analysis of existing processes
- Software release analysis
- Test plans and scripts
- Functional testing
- User Acceptance Testing (UAT)
- Monitor progress schedules
- Earned value analysis
- Quality monitoring
- Risk assessment and management
- Process and data integration

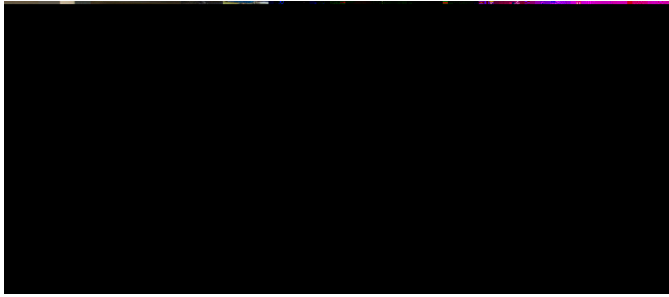
SYSTEM IMPLEMENTATION

- Application/process integration
- Application/process roll-out
- Training course design
- Start-up and ongoing training
- Live, written, and video training
- In-person group support
- Help desk support
- Communication protocols
- Meeting coordination
- Executive presentations
- Internal marketing and promotion

PROJECT MANAGEMENT TECHNOLOGY

- Program strategy and policy
- Program integration and support
- Project stand-up
- Data migration
- End-user support and training
- Change management
- Spatial data validation

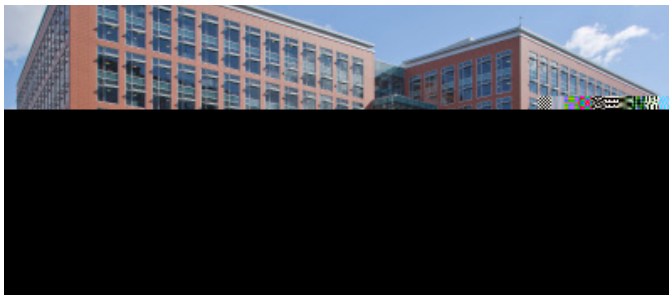
PROVEN EXPERIENCE



COBie PLAYBOOK STANDARD Developed GSA specific requirements for facility data required to be delivered during design, construction, and facility management databases.



NASA MEASUREMENT SYSTEMS LABORATORY BIM Expertise and support services for BIM deliverables related to design of the 175,000 SF laboratory building.



GSA BIM PROGRAM STRATEGIC PLAN & ROADMAP Provided GSA Central Office with a strategic BIM plan and implementation roadmap.

SMALL BUSINESS Procon is a small business according to federal SBA standards for applicable NAICS codes.

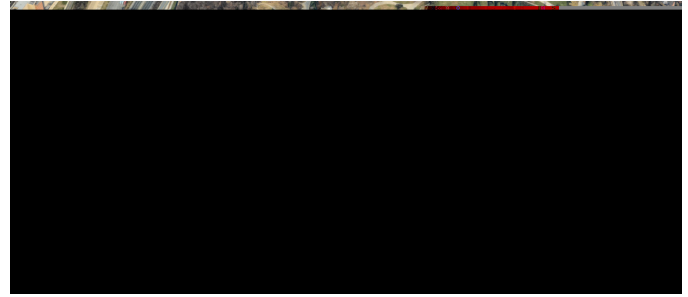
SDVOB Procon is part of an SBA-registered Service-Disabled Veteran-Owned Small Business JV which makes us available for SDVOB set-aside work.

8(a) Procon is part of an SBA-registered 8(a) mentor-protégé relationship which makes us available for 8(a) set-aside work.

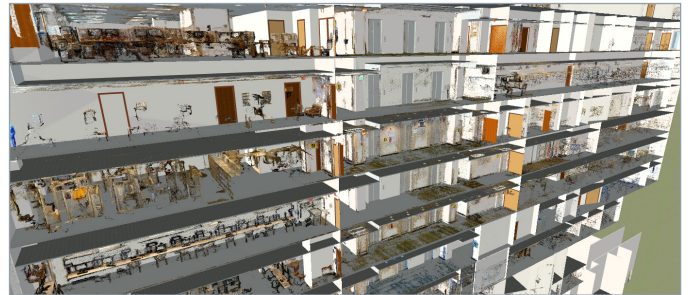
CONTACT US

Steve DeVito | Director of Technology
sdevito@proconconsulting.com | 215.837.8587

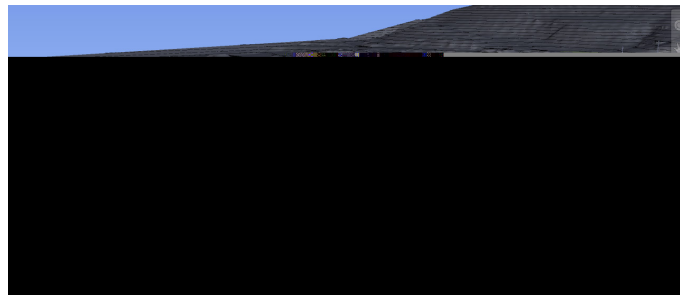
Jason Lopez | Senior Vice President of Services
jlopez@proconconsulting.com | 954.444.6792



DHS AT ST. ELIZABETHS GIS Development of GIS database of existing and as-built conditions including utilities, landscape, civil infrastructure, and other site conditions.



SCAN TO BIM Provided A/E firm rapid reality capture and Revit modeling service for a 600,000 SF office building.



SAN YSIDRO PORT OF ENTRY DIGITAL TWIN Developed an ESRI GIS based Digital Twin of the horizontal and vertical infrastructure for design, construction, and operations.

GSA PROCUREMENT VEHICLES

MULTIPLE AWARD SCHEDULE (GS-00F-247CA)

GSA's consolidated schedule available to all federal agencies

541330ENG Construction Management and Engineering

541611: General Management Consulting Services

541219: Financial and Budget Services

OASIS SMALL BUSINESS POOL 1 (47QRAD20D1096)

Best-in-Class solution available to all federal agencies for a comprehensive range of Program Management, Engineering, Management Consulting, and Financial Services.

procon|con

proconconsulting.com